

# APII Update – KOREN –

APII Workshop 2014  
2014. 10.8.

Sanggyun KIM  
KOREN/NIA

# KOREN Update in 2014



## ■ Infrastructure

- Backbone(Up to 160G) and Access link (up to 10G) for applying various ICT technologies testing capability
  - 10~160G backbone is deployed nationwide based on ROADM (7 Pops)
  - About 70 connections as Access link to user site
  - Wireless test(LTE only) facilities (EPC core and femto AP) newly deployed
  - Interconnect with KREONET as 2\*10G (operate each 10G separately)
- Testbeds
  - Distributed SDN/Openflow resources was on-going operational for utilization . Promote local SDN developing SME company to co-work tech. verification
- Collaborate with Other resources
  - M2M testbed, Cloud nodes, Bigdata facility, Giga internet service infra and etc

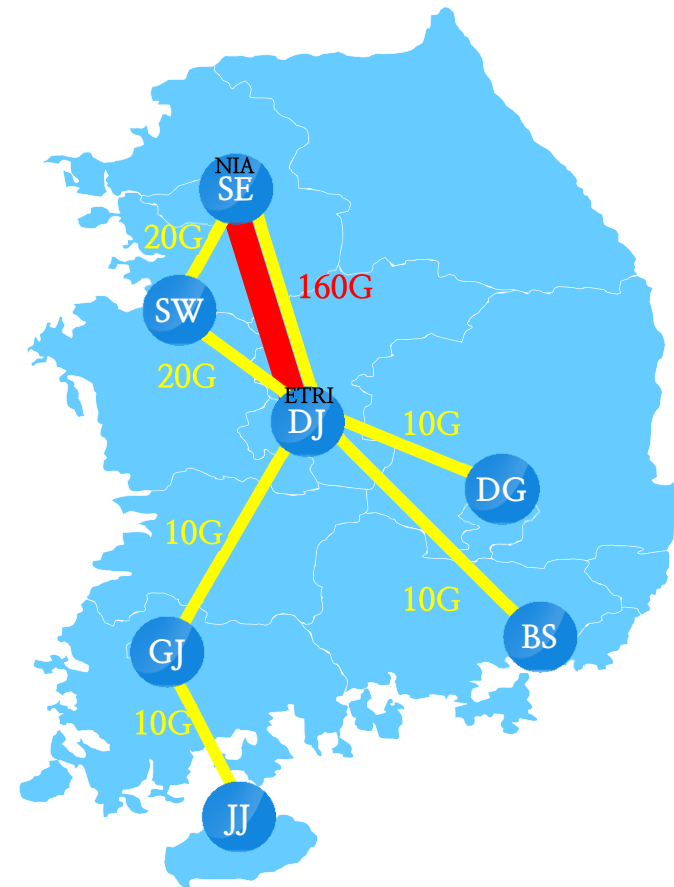
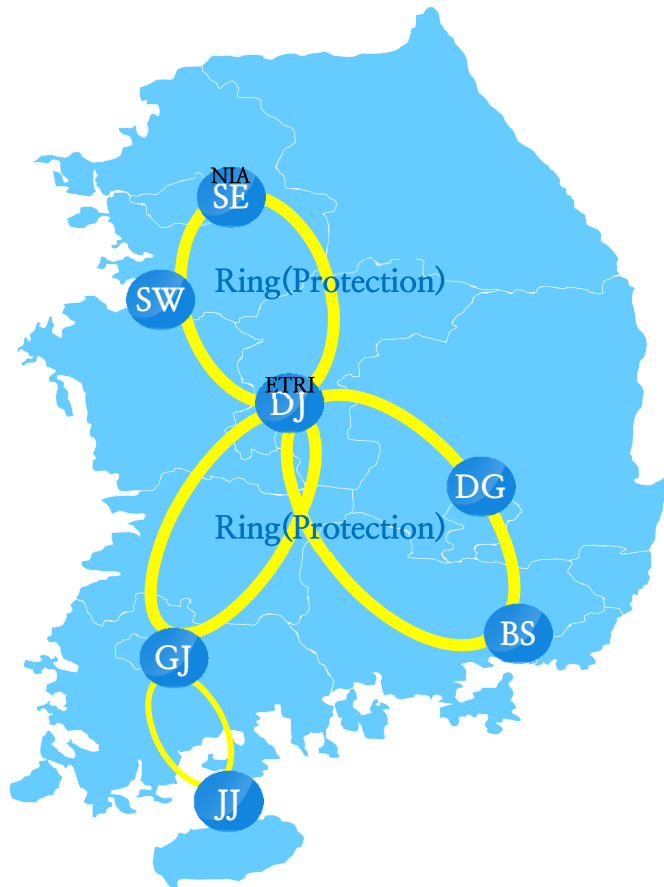
## ■ Projects

- SDN(Openflow), Mobile environment and medical application
  - 6 Awarded projects are on-going now
  - Focus on future internet related technology and develop testing facility issues

# Backbone

Rebuilding 100G infrastructure

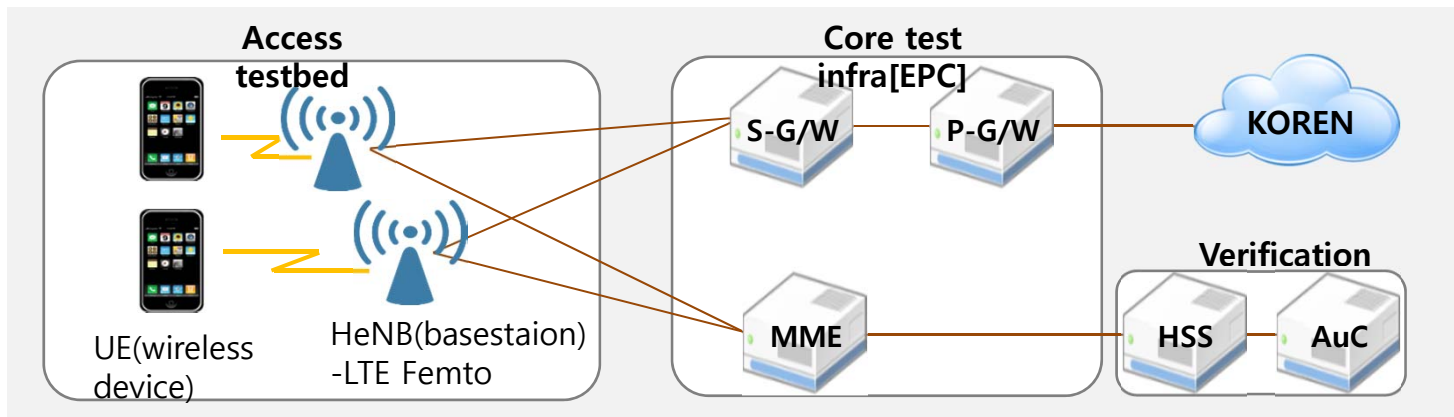
ROADM + ASR Routers



BS: BuSan  
DG: DaeGu  
DJ: DaeJeon  
GJ: GwangJu  
SE: Seoul  
SW: SuWon  
JJ: JeJu

# KOREN Update in 2014

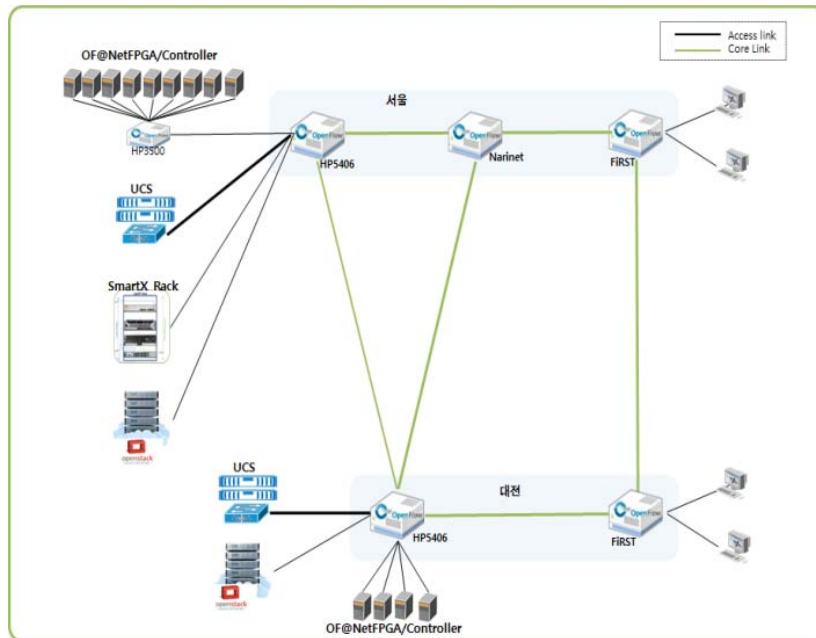
- **New domestic backbone was deployed**
  - Backbone architecture is similar but upgrade bandwidth
    - ASR routers(Seoul, Daejeon) and local vendor's equipment s
  - Centralized resources for better experimental environment and easy to operate and support
- **Additional resource added**
  - Mobile research facility attached to KOREN
    - LTE & wifi related technology would be tested



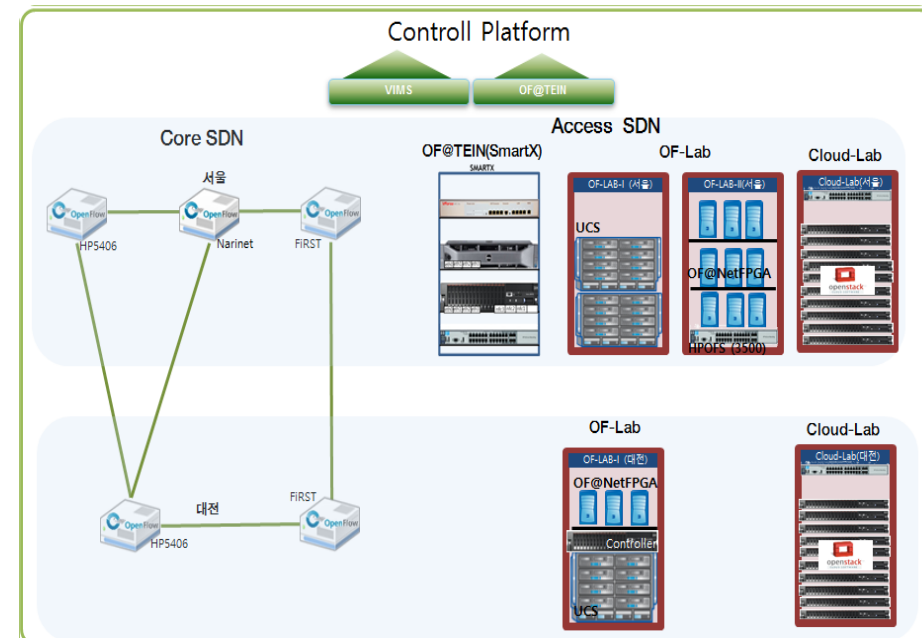
# SDN Testbed

## SDN facility status in KOREN

- Operate OF Switch, OpenStack, UCS, Controller between Seoul & Daejeon
- Controller : OSCAR, NOX, Floodlight, IRIS (ETRI/release OCT/2013)
- Equipments : First(ETRI], Narinet(OF@TEIN), NetFPGA

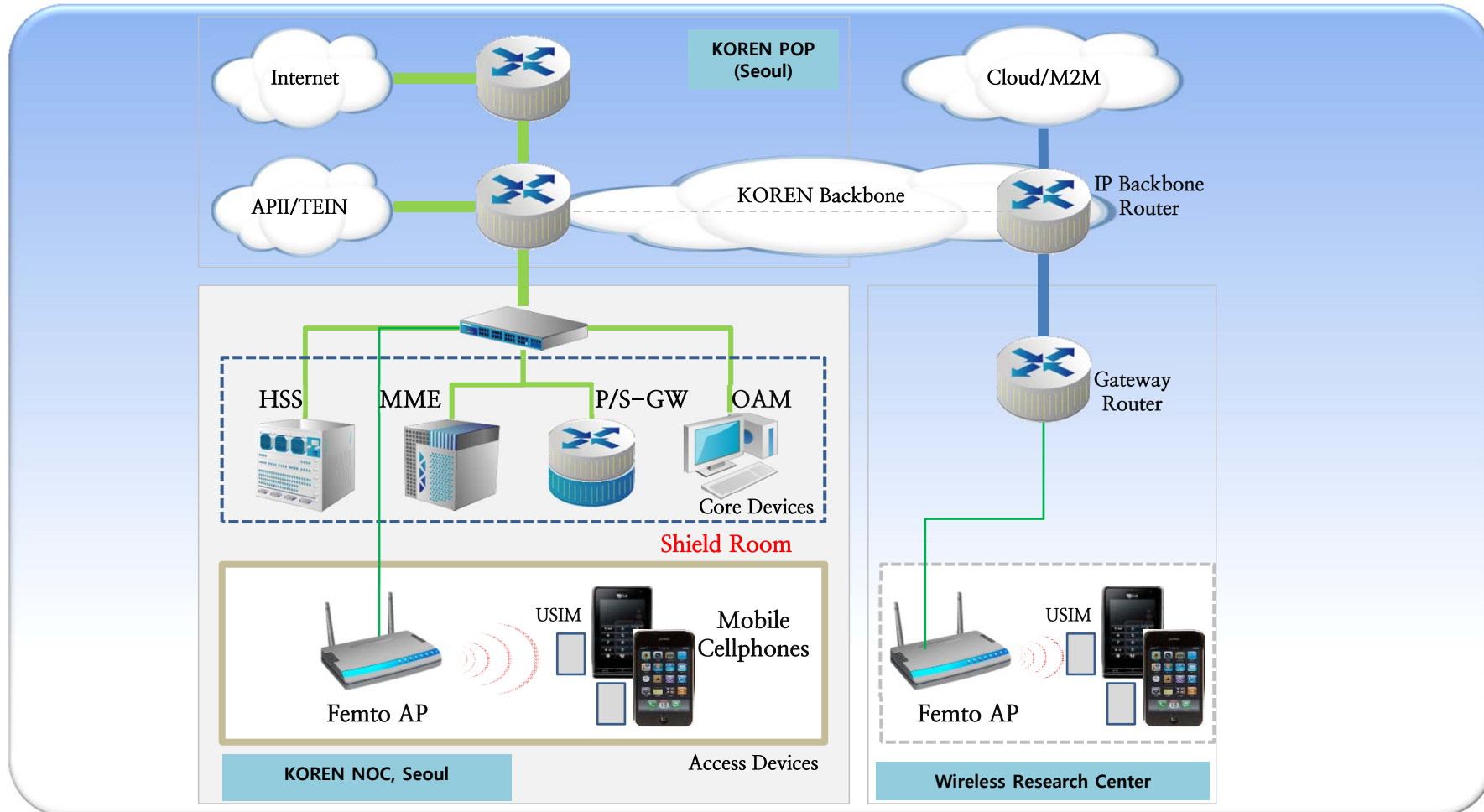


▲ KOREN OF-PC



▲ SDN H/W allocations

# Mobile Testbed



# Other Testbeds



## ■ M2M testbed

- Deploy M2M testbed for pilot service (co-work with NIPA)
- Provide testing and developing toolkit and service platform
- Connect with KOREN to M2M support center for testing

## ■ Cloud environment

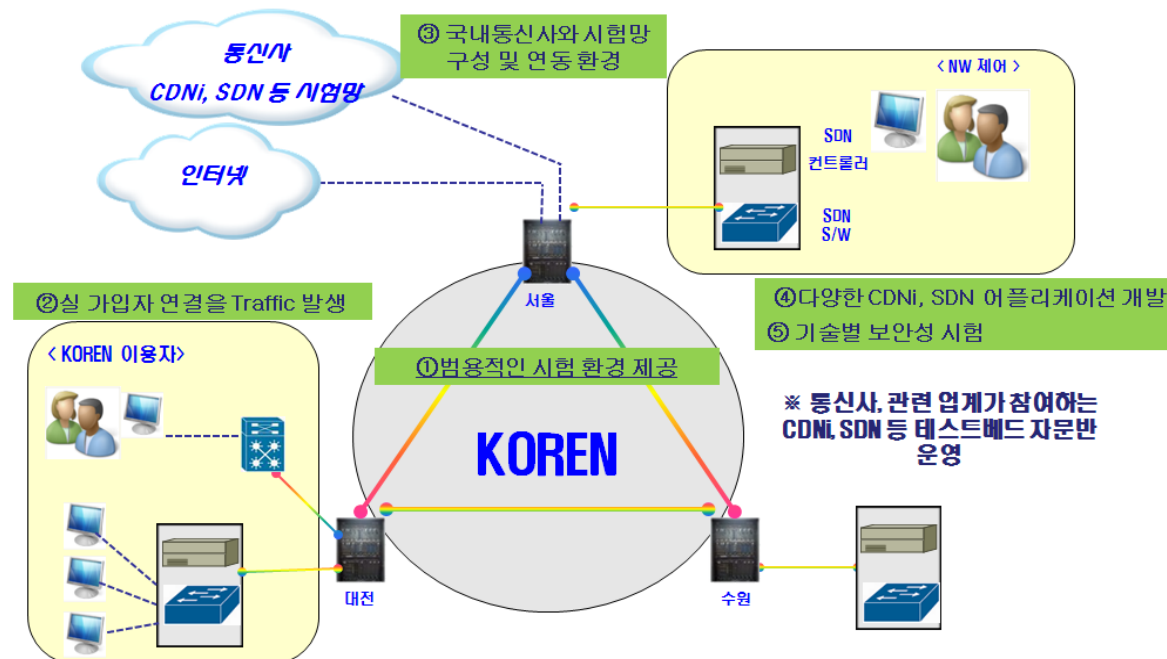
- Providing virtual resources to researchers(individual, univ. , industry)
- About 100 computing nodes would connect to KOREN this year and would provide cloud infrastructure and virtual resources

## ■ BigData analysis platform

- Providing resources which could make Bigdata related technology and service based on public data
- KOREN provide connectivity to someone or company which want to access Bigdata facility.

# Giga Internet pilot Service

- Giga Internet pilot providers(KT, SKB, LGU+) try to adapt this service in current commercial service
  - KOREN connected each providers trial environment and verify related techs (Contents network efficiency, intelligent tech(SDN))
  - With the results, they would decide whether service will be launched or not
- Currently, consider service plan and proceed commercialization





# Verify R&D results

- **Test & verification Center for next generation network**
  - Deploy environment testing & verifying research output for advancement of R&D projects
  - Locate test environment in KOREN based environment
  - Co-work with R&D Projects partners
  - Support test of commercial equipment
    - Issue test result report.
- **Activities**
  - Make test procedure for each candidate project
  - Share test equipment with research community (industry, university, and research institutes)



# Plans

- Collaborations in 2015

- Focus on global collaboration infrastructure with partners (especially with Japan)
- Domestically, expand facility based on user's demand
- Develop new collaboration fields
- APII workshop 2015 will be held in KOREA



**Thank you**

**[koren@nia.or.kr](mailto:koren@nia.or.kr)**